

SATURDAY, MAY 30, 1885.
 On the Ground. Three o'clock.

YARRAVILLE
 Hyde Street, Francis Street,
 Hyde Street, Francis Street.

Within Five Minutes' Walk of the Railway Station, on the Main Thoroughfare to Williamstown, near the Bridge. Made Roads, Water and Gas.

29 BUILDING ALLOTMENTS

Each having a Right-of-Way at Rear, and Commanding a Magnificent View, coupled with Most Perfect Drainage. HALF-HOURLY TRAINS run from 6 in the Morning to 12.30 am.

£5 Deposit. No Interest. £5 Deposit.

TO INVESTORS, SPECULATORS, BUILDERS, ARTISANS, &c.

JOHN BUCHAN & CO.

Are instructed to sell by public auction, on Saturday, 30th inst., on the Ground, at 3 o'clock, those two original Crown Allotments, 2R and 2Y, Cut-paw-paw, carefully surveyed and pegged out by Messrs. Bruford & Brain into

29 BUSINESS AND COTTAGE SITES, 29

Fronting Hyde, Francis, and Taylor Streets. Each lot has a roadway at rear. In announcing this exceptionally advantageous subdivisioinal sale, the Auctioneers respectfully direct the attention of the public to its many advantages over any other properties submitted lately. Five minutes' walk from Railway Station. Healthiest position in Yarraville. Magnificent view of Melbourne, the River, Hobson's Bay and the Shipping. Opposite the New Cut. On the main road to Williamstown. Surrounded by numerous factories and industries, including the Sugar Works, Woolen Mills, &c., &c. Contiguous to the State Schools, shops, &c. Van Yearn and Gas Mains. Also the wonderful advancement made by Yarraville within the last twelve months. The public are urged to at once inspect the land and obtain a plan of subdivision.

Mark the Terms--£5 Deposit; Balance in 3, 6, 9, 12 Months. NO INTEREST.

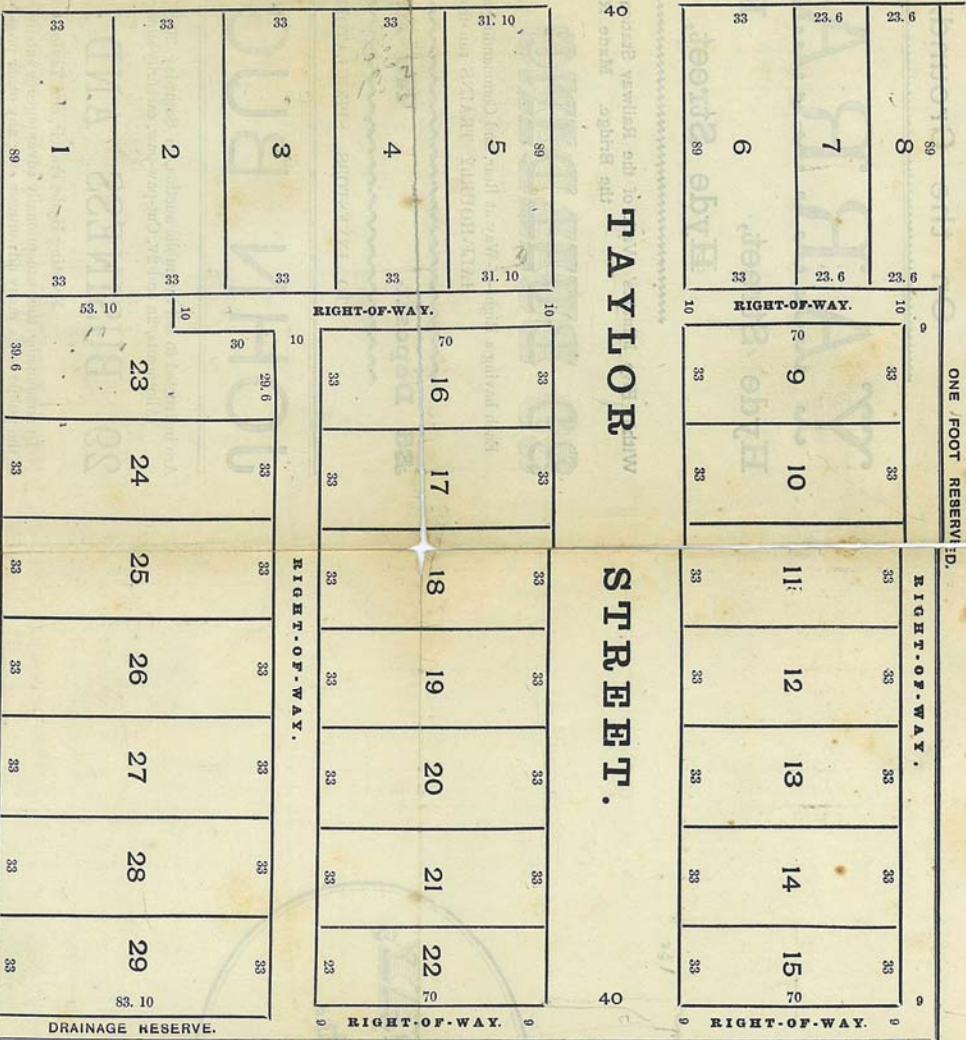
TITLE-CROWN CERTIFICATE.

Solicitor, F. J. SINCOCK, Esq., of Normanby Chambers, Melbourne, and Footscray.

Full particulars at Auctioneers, 37 Queen-street, Melbourne. For Plan see other side.

SATURDAY,
 May 30th.

HYDE STREET.



Asst. M'Kinnon & Co., Printers, 39 Queen-street.

FRANCIS STREET.

BRIDFORD & BRAIN,
 AUTHORIZED SURVEYORS,
 47 CHANCERY LANE.

Handwritten notes:
 3-5
 2-5
 3-6
 5-6
 11-10
 17-10
 17-10

Handwritten notes:
 17-10
 17-10
 17-10

1907

SATURDAY, MARCH 23rd, 1907 YARRAVILLE,

To wind up Deceased Estates,

15 Business and Villa Sites

At 3 o'clock, (opposite Stony Creek Hotel),

HYDE STREET, FRANCIS STREET

3 Allotments, each 33ft. Frontage,
by depths of 89ft.

(Near Hyde Street). 5 Allotments, each
33ft. Frontage by 83ft. 10ins. deep.

No sale offered @ 15/-

one sale, lot 10/11

At 4 o'clock,

Corner ANDERSON & FEHON STS.,

3 Allotments, each 33ft. Frontage by 90ft.

FEHON STREET, 2 Allotments, each
33ft. Frontage.

POWELL STREET, Corner Albert St.,


(OPPOSITE STATE SCHOOL),

2 Allotments, each 34ft. by 90ft. A Right-of-way to each Allotment.

T. W. & A. A. HARRIS

Sell by Auction, (per T. W. HARRIS), on the Ground, as above.

These Allotments are all Exceptionally Well Situated and MUST BE SOLD to wind up the Estates

 TERMS TO SUIT PURCHASERS.